

user manual



Joomla! Template



adHome

adHome v1.0 - Manual v1.0

bonusthemes.com

EXTREME JOOMLA TEMPLATING



Table of Contents

1. Introduction	3
2. General information.....	3
2.1 Required software.....	3
2.2 Browser compatibility	3
3. Template installation	4
4. Layout	5
4.1 Template map.....	6
4.2 CSS structure.....	7
4.3 Module Suffixes	8
5. Template setup.....	9
5.1 Logo setup.....	9
5.2 Banner setup	9
5.3 How to show/hide the BonusThemes logo.....	9
5.4 PNG fix	9
5.5 How to enable/disable CMenu	9
5.6 How to set the Joomla menu for CMenu.....	10
5.7 How to enable/disable the SEOCP feature	10
5.8 Hidden module positions	10
5.9 Custom menu styling.....	10
5.10 How to set the width of any position	11
5.11 Search module recommended setup.....	11
Appendix A - How to install a template	12
Appendix B - How to setup a module	15





1. Introduction

adHome is the September 2008 Joomla! template from BonusThemes.com.

adHome is a new dazzling template primarily built for professional estate agents. With adHome's flexible design you may also use it for a variety of other types of websites too.

Read the following sections to find detailed information and illustrated examples that explain the ways you can use the template.

2. General information

2.1 *Required software*

adHome works with Joomla! 1.5.x and it is recommended to use the latest version available.

Visit <http://www.joomla.org> to find which is the latest available version for Joomla!. If you are not sure which version you are using at the moment, login to the administrator control panel and locate the version number on the top right corner of the page.

2.2 *Browser compatibility*

adHome is compatible with:

- Firefox 3
- Firefox 2
- Safari 2
- MS Internet Explorer 7
- MS Internet Explorer 6





3. Template installation

To install the template you can use the Joomla! installation mechanism:

Extensions > Install/Uninstall

Alternatively, you may unpack the template in the /template directory.

To activate the template go to

Extensions > Template Manager

select the template and click the “Default” button.

Read Appendix A for illustrated examples on how to install and activate a template.





4. Layout

The layout of adHome provides 27 regular module positions and 5 invisible positions for supplementary services.

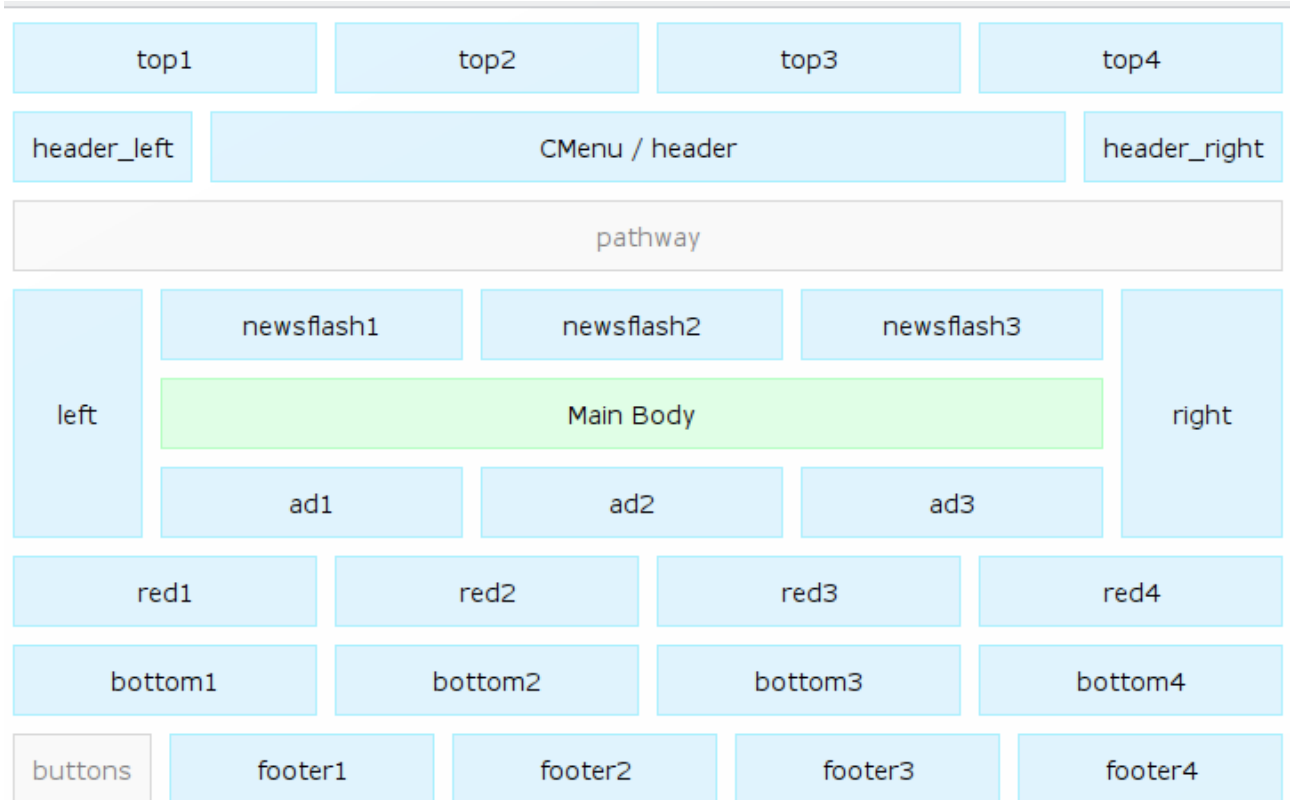
This template uses a collapsible module technology. That makes these positions disappear if there are no published modules in them. This feature gives you the capability to make arrangements for wider space in your pages.

On the top of its layout, adHome uses CMenu a menu script that takes input from a Joomla menu. You have the option of disabling this menu and have a module position in its place. This can be set from the Template Manager and the name of the position that replaces CMenu is “header”.





4.1 Template map



Map of regular module positions for the template adHome.

adHome also supports 5 hidden positions for supplementary services. Read section 5.8 for more information.



4.2 CSS structure

adHome uses the main Joomla template CSS file for typography and other general styling. That main file is `/templates/bt_adhome/css/template.css`.

The file `/templates/bt_adhome/css/layout.css` contains CSS definitions that control the layout.

The file `/templates/bt_adhome/css/cmenu.css` contains CSS definitions that control the layout of CMenu, the script for the menu on the top area.

Naming system for module positions:

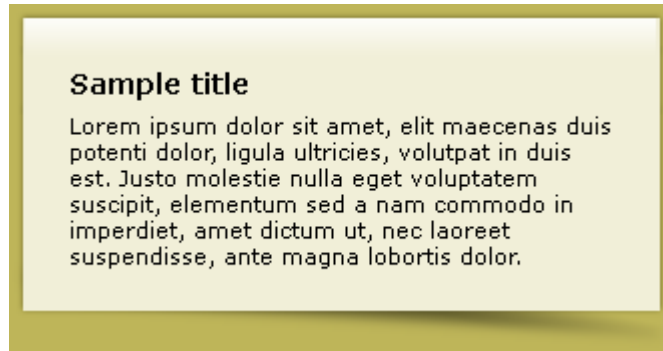
The IDs of the `<div>` tags that wrap the template positions always start with “pos_”. For example the module position “user1” takes the id “pos_user1”.



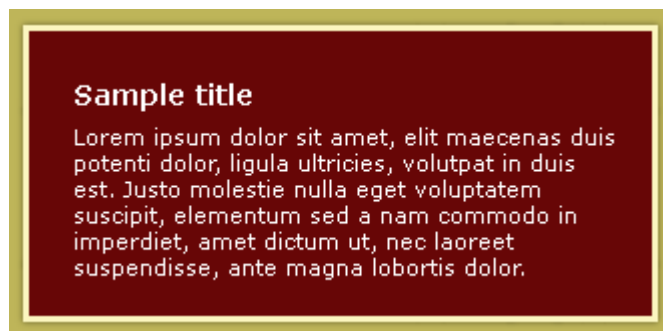


4.3 Module Suffixes

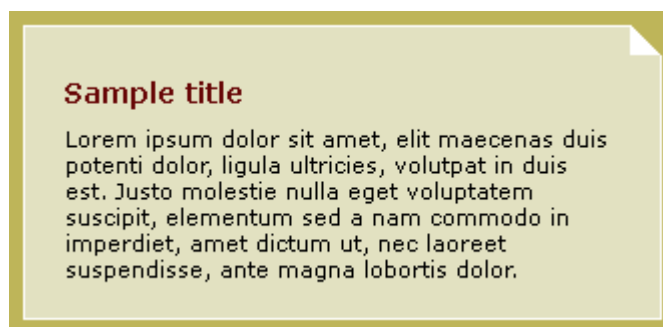
There are 3 module suffixes that match the styling of the template.



mstyle1



mstyle2



mstyle3





5. Template setup

5.1 Logo setup

To setup your logo, publish a “Custom HTML” module with an uploaded image in any template position.

Example:

1. Upload your logo on your website
2. Create a new “Custom HTML” module that contains the URL of the image you just uploaded
3. Publish that module in a suitable position

You are free to publish your logo in any position.

5.2 Banner setup

To setup a banner, publish a banner module in any template position.

5.3 How to show/hide the BonusThemes logo

You can show or hide the BonusThemes logo from
Extensions > Template Manger

5.4 PNG fix

MS Internet Explorer 5 and 6 have trouble rendering the alpha levels (transparencies) of PNG images. The template is equipped with a script that fixes this problem. To enable transparencies in PNG files for MS Internet Explorer 5 and 6, use the CSS class “pngfix”. In some cases images appear distorted. To avoid this distortion provide “width” and “height” attributes in your HTML tags. Alternatively, you can try the CSS class “pngfix_static”.

PNG fix’s website:

<http://www.twinhelix.com>

5.5 How to enable/disable CMenu

CMenu (Classic Menu) is the menu that appears on the top of the page.

If you want to use a module instead of CMenu you can disable it from
Extensions > Template Manger

locate the option “Header Menu Type” and set it to “Position Header”. You can now publish your module in the position “header”.





5.6 How to set the Joomla menu for CMenu

CMenu by default shows the contents of the Joomla menu “topmenu”.

In order to change the content of CMenu, go to
Extensions > Template Manager

and use the option “Header Menu Name”.

5.7 How to enable/disable the SEOCP feature

SEOCP (Search Engine Optimization Content Positioning) is a feature that controls the position of the main content of the pages.

When SEOCP is enabled the content is internally positioned on the top of the HTML code and this helps search engines find and analyze the content easier. When the page loads, a JavaScript script moves the content to the proper position so that the visual structures can display it in the way the human eye can understand better.

SEOCP needs JavaScript to work. This means that users with JavaScript disabled will not be able to read the content of the page.

By default, SEOCP is disabled. To enable SEOCP go to
Extensions > Template Manager

and use the option “SEOCP”.

5.8 Hidden module positions

adHome includes 5 hidden positions for supplementary functionality. The names of these positions are “aux1”, “aux2”, “aux3”, “aux4”, “aux5”.

5.9 Custom menu styling

The adHome template has a default way of laying out menus. It uses a specific set of CSS rules that may not appear nice in exception cases. One such exception is a horizontal menu.

To make the template ignore the default layout for menus you can use a custom “Menu Class Suffix”. This should not be confused with “Module Class Suffix”. From the administrator’s control panel go to
Extensions > Module Manager

open the menu module that needs to have a different layout, open the “Advanced Parameters” panel on the right side of the page and set the “Menu Class Suffix” to any value (type for example “mystyle”) and click the “Save” button.





5.10 How to set the width of any position

To set the width of a module position in the template go to
Extensions > Template Manager

click the adHome template and use the “Position widths” text box.

You can simply type the name of the template, a semi-colon and a width in pixels. Each line should have one setting.

Example:

top1:160

right:200

red4:350

To set the width of the main body use the keyword: “mainbody”.

Example:

mainbody:700

5.11 Search module recommended setup

The recommended area for publishing the search module is in any of the “top1”, “top2”, “top3” or “top4” positions.

You should also enable the “Search button” and the “Search button as image” options. In order to do that go to the Module manager, select the search module and locate these options on the “Parameters” panel.

Read Appendix B for illustrated examples on how to set up modules.





Appendix A - How to install a template

To install a template in Joomla! 1.5.x follow the next 6 steps:

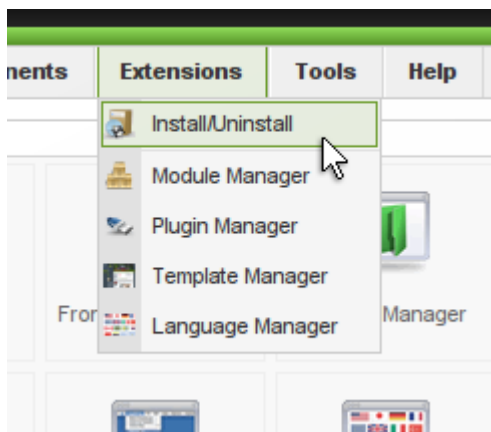
Step 1

Get into the administrator's control panel with your browser.

The URL usually looks like

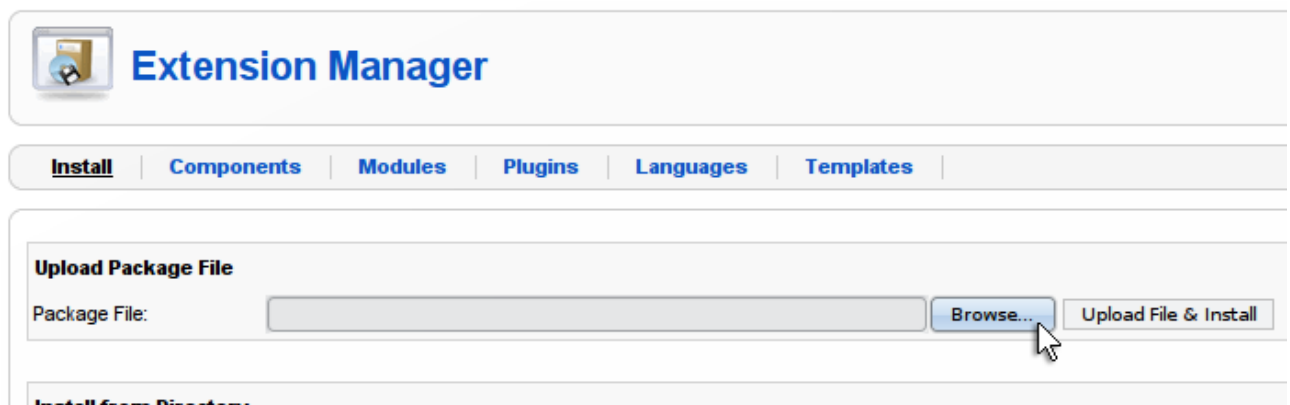
<http://www.example.com/administrator/>

Step 2



Go to the menu *Extensions > Install/Uninstall*

Step 3

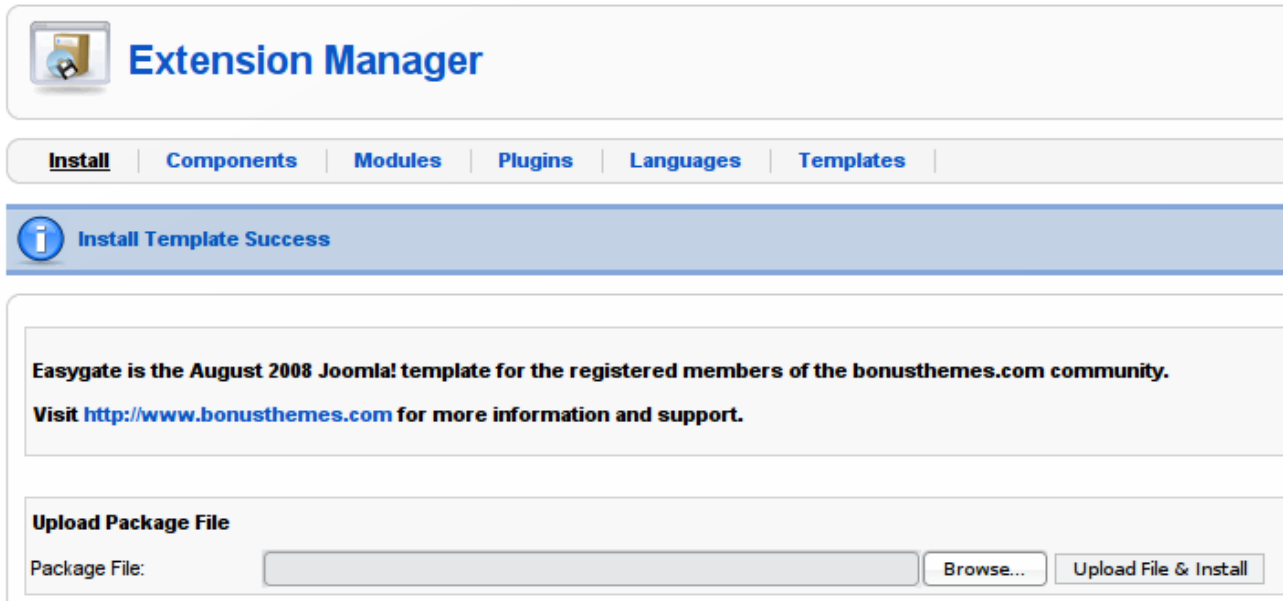


Click the *Browse* button to find the archive of the template, and then click *Upload File & Install* to perform the installation procedure.



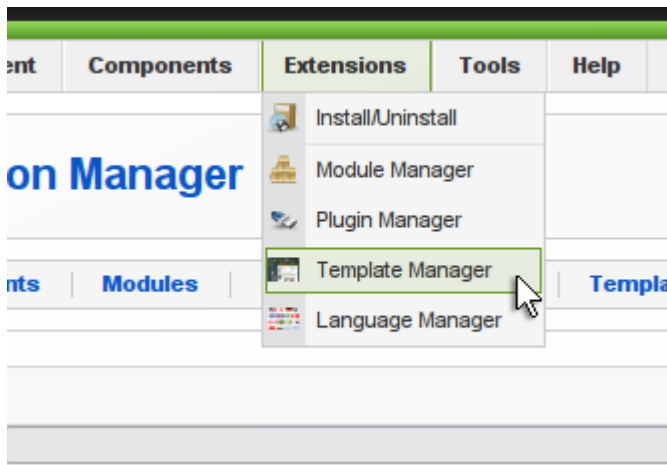


Step 4



If the installation was successful you will be able to see a success message like the one in the image.

Step 5



The next thing to do is to activate the template.

Go to *Extensions > Template Manager*



Step 6

The screenshot shows the Joomla! Template Manager interface. At the top, there is a navigation bar with tabs: Site, Menus, Content, Components, Extensions, Tools, and Help. Below this is a toolbar with icons for Preview, Edit, and Help. The main heading is 'Template Manager'. Below the heading, there is a table with the following columns: #, Template Name, Default, Assigned, Version, Date, and Author. The table contains four rows of templates. The second row, 'bt_easygate', is highlighted in yellow. A yellow circle labeled '1' is drawn around the radio button in the first column of this row. Another yellow circle labeled '2' is drawn around the 'Default' button in the toolbar. The 'Default' button is represented by a yellow star icon.

#	Template Name	Default	Assigned	Version	Date	Author
1	beez			1.0.0	19 February 2007	Angie Radtke/Robert Deutz
2	bt_easygate			1.0	August 2008	BonusThemes.com
3	JA_Purity	★		1.2.0	12/26/07	JoomlaArt.com
4	rhuk_milkyway			1.0.2	11/20/06	Andy Miller

Display # 20

From the *Template Manager* page click on the template name you just installed and then click the *Default* button to make that template the default one.





Appendix B - How to setup a module

To setup a module in Joomla! 1.5.x follow the next 4 steps:

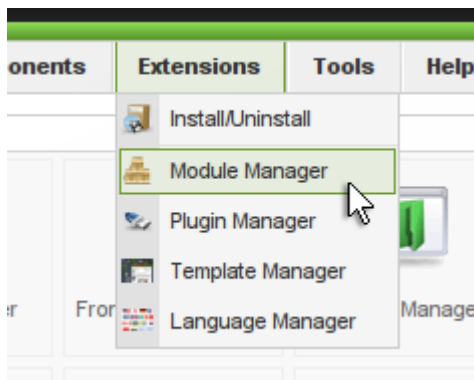
Step 1

Get into the administrator's control panel with your browser.

The URL usually looks like

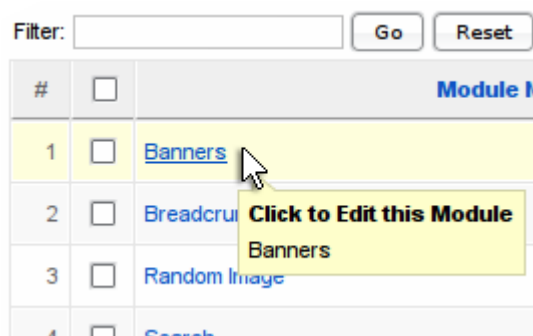
<http://www.example.com/administrator/>

Step 2



Go to the menu *Extensions > Module Manager*

Step 3



Find the module you want to edit and click it.

Note: If you cannot find your module perhaps there are too many modules split in pages. Go through the pages to find your module, or use the filters to limit the list of modules on your screen.



Step 4

Module: [Edit]

Details

Module Type: **mod_banners**

Title: Banners

Show Title: ☐ No ☒ Yes

Enabled: ☐ No ☒ Yes

Position: left

Order: 0::Banners

Access Level: Public

ID: 30

Description: The Banner Module allows to show the active Banners out of the Component within your site.

Menu Assignment

Menus: ☒ All ☐ None ☐ Select Menu Item(s) from the List

Menu Selection: ExamplePages

- Section Blog
- Section Table
- Category Blog
- Category Table
- keyconcepts
- Extensions
- Content Layouts

Parameters

Module Parameters

Target: New Window with Browser Navigation

Count: 1

Banner Client: Open Source Matters

Category: Joomla! Promo

Search By Tags: ☒ No ☐ Yes

Randomise: Sticky, Randomise

Header Text:

Footer Text:

Module Class Suffix: mstyle1

Advanced Parameters

Now you are in the page that controls the module.

From the Details area you can control many features including:

- Set the title of the module
- Show or hide the title
- Publish or unpublish the module by checking the Enabled attribute
- Set the position of the module

From the Parameters area you can control other features including the ability to

- Set the Module Class Suffix

To save your changes click the Save button ton the top right corner.



bonusthemes.com

E X T R E M E J O O M L A T E M P L A T I N G

- Graphics: Panos Gazepidis - Mediagrafix - <http://www.mediagrafix.gr>
- Programming: Alex Stylianos - Creative Pulse - <http://www.creativepulse.eu>

Distribution - Support: <http://www.bonusthemes.com>