

user manual



Joomla! Template



  
**shopit**

Shopit v1.0 - Manual v1.0

**bonus**themes.com

EXTREME JOOMLA TEMPLATING



## Table of Contents

1. Introduction .....	3
2. General information.....	3
2.1 Required software.....	3
2.2 Browser compatibility .....	3
3. Template installation .....	4
4. Layout .....	5
4.1 Template map.....	6
4.2 CSS structure.....	7
4.3 Module Suffixes .....	8
5. Template setup.....	12
5.1 Logo setup.....	12
5.2 Banner setup .....	12
5.3 How to show/hide the BonusThemes logo.....	12
5.4 PNG fix .....	12
5.5 How to enable/disable CMenu .....	13
5.6 How to set the Joomla menu for CMenu.....	13
5.7 How to enable/disable the SEOCP feature .....	13
5.8 Hidden module positions .....	13
5.9 Custom menu styling.....	14
5.10 How to set the width of any position .....	14
5.11 How to install the VirtueMart 1.1 addons.....	14
5.12 Installation notes on accompanied modules .....	15
5.13 How to connect CMenu with VirtueMart 1.1 .....	15
Appendix A - How to install a template .....	17
Appendix B - How to setup a module .....	20
Appendix C - CMenu to VirtueMart 1.1 link reference .....	22
C.1 category .....	22
C.2 featured .....	23
C.3 latest.....	23
C.4 random.....	24
C.5 selected .....	24
C.6 topten.....	25





## 1. Introduction

Shop It is the December 2008 Joomla! template from BonusThemes.com.

Shop It is a Joomla! template primarily designed for e-commerce websites. It has a very flexible layout that makes it able to adjust to many other types of content such as blogs, portals and presentation websites.

Shop It introduces lots of new functionalities for VirtueMart. 10 new modules with animations were build to support this template, along with a new technology that feeds the template's menu with data from VirtueMart.

Read the following sections to find detailed information and illustrated examples that explain the ways you can use the template.

## 2. General information

### 2.1 *Required software*

Shop It works with Joomla! 1.5.x and it is recommended to use the latest version available.

Visit <http://www.joomla.org> to find which is the latest available version for Joomla!. If you are not sure which version you are using at the moment, login to the administrator control panel and locate the version number on the top right corner of the page.

### 2.2 *Browser compatibility*

Shop It is compatible with:

- Firefox 3
- Safari 3
- MS Internet Explorer 7
- MS Internet Explorer 6





### 3. Template installation

To install the template you can use the Joomla! installation mechanism:

Extensions > Install/Uninstall

Alternatively, you may unpack the template in the /template directory.

To activate the template go to

Extensions > Template Manager

select the template and click the “Default” button.

Read Appendix A for illustrated examples on how to install and activate a template.

Shop It is designed to work well with VirtueMart 1.1 . If you do use VirtueMart then read more about how to install it (section 5.11) and about the modules that support this template (section 5.12). The mod\_vmrotone\_\* series of the supported modules require some specific module styles (or module suffixes). Read more on section 4.3 and 5.12.





## 4. Layout

The layout of Shop It provides 25 regular module positions and 5 invisible positions for supplementary services.

Shop It implements a technology that makes it really easy to set the width of any position or the main body. Read section 5.10 for more information.

This template uses a collapsible module technology. That makes some positions disappear if there are no published modules in them. This feature gives you the capability to make arrangements for wider space in your pages.

On the top of its layout, Shop It uses CMenu, a menu script that uses a regular Joomla menu as a data source. You have the option of disabling this menu and have a module position in its place. This can be set from the Template Manager and the name of the position that replaces CMenu is “header”. Read sections 5.5 and 5.6 for more information.

CMenu can also be easily connected with VirtueMart’s products and categories. Read section 5.13 and appendix C for more details.

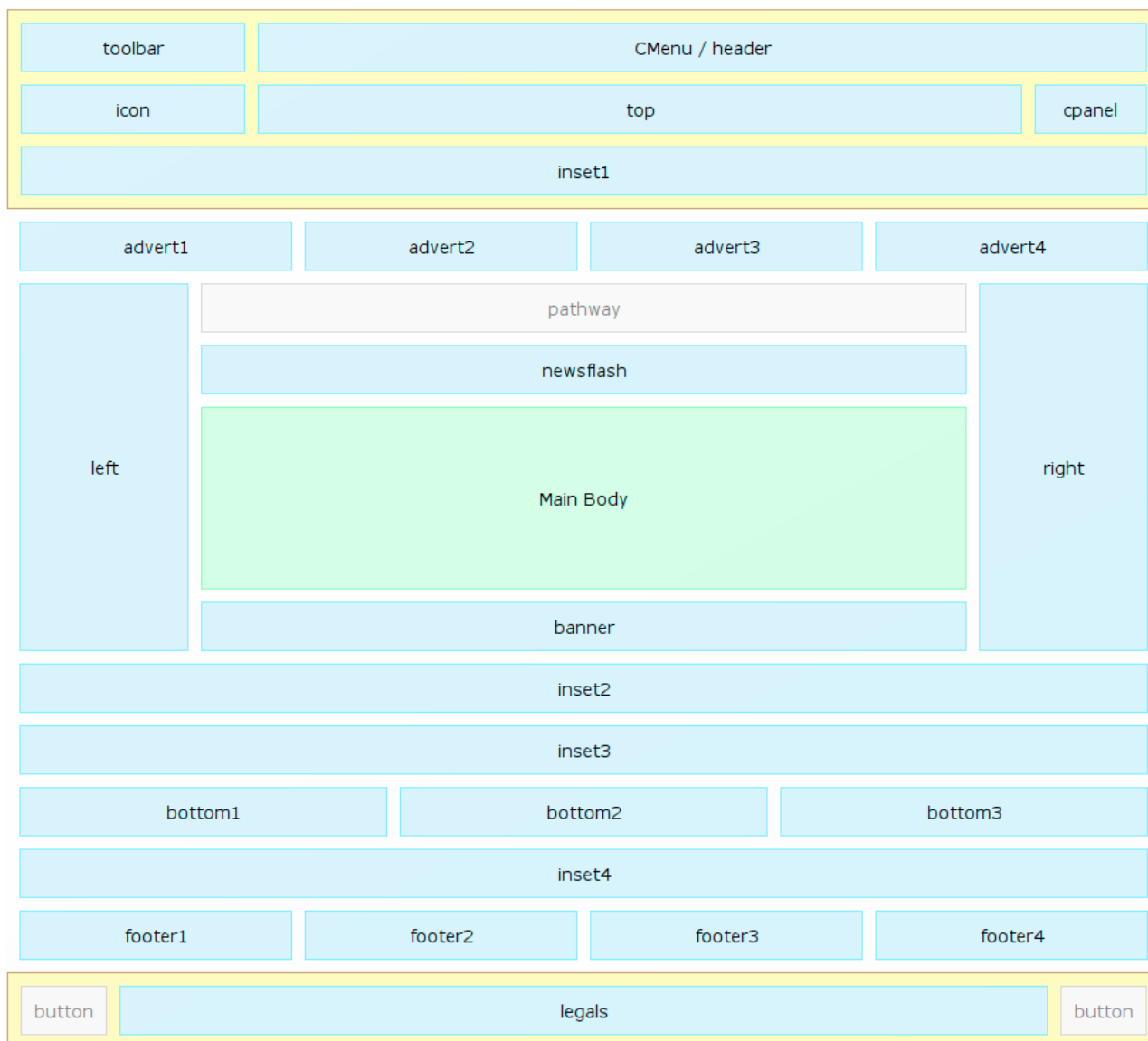
Shop It is designed to work well with VirtueMart 1.1 . If you do use VirtueMart then read more about how to install it (section 5.11) and about the modules that support this template (section 5.12). The `mod_vmrotone_*` series of the supported modules require some specific module styles (or module suffixes). Read more on section 4.3 and 5.12.

This template follows a rectangular layout philosophy with minimum gaps between module positions. In order to help webmasters create a nice composition, a new kind of technology is applied. Some module suffixes have 1 or 3 alternatives that add a line on their top or their bottom. For example “mstyle1” also has the alternative “mstyle1u” (where “u” means up). This alternative outputs a gray line on its top. “mstyle1d” (where “d” means down) outputs a gray line on its bottom. “mstyle1ud” outputs a gray line on its top and on its bottom. Read section 4.3 for more information.





## 4.1 Template map



Map of regular module positions for the template Shop It.

Shop It also supports 5 hidden positions for supplementary services. Read section 5.8 for more information.

The areas in the yellow background have a fixed height.

Modules in positions “footer1”, “footer2”, “footer3” and “footer4” should be assigned the module suffixes “mstyle7” if they are on the top and “mstyle8” if they are under the top. This is required because the header on the top must have a larger gap to match the graphics in the background. Read section 4.3 for more details.



## 4.2 CSS structure

Shop It uses the main Joomla template CSS file for typography and other general styling. That main file is `/templates/bt_shopit/css/template.css`.

The file `/templates/bt_shopit/css/layout.css` contains CSS definitions that control the layout.

The file `/templates/bt_shopit/css/cmenu.css` contains CSS definitions that control the layout of CMenu, the script for the menu on the top area.

The file `/templates/bt_shopit/css/virtuemart.css` contains CSS definitions that control the layout of VirtueMart.

### Naming system for module positions:

The IDs of the `<div>` tags that wrap the template positions always start with “pos\_”. For example the module position “left” takes the id “pos\_left”.





## 4.3 Module Suffixes

There are 8 + 3 module styles (or module suffixes) that match the styling of the template. The extra 3 styles are made to support the `mod_vmrotone_*` series of modules.

This template follows a rectangular layout philosophy with minimum gaps between module positions. In order to help webmasters create a nice composition, a new kind of technology is applied. Some module suffixes have 1 or 3 alternatives that add a line on their top or their bottom. For example “`mstyle1`” also has the alternative “`mstyle1u`” (where “u” means up). This alternative outputs a gray line on its top. “`mstyle1d`” (where “d” means down) outputs a gray line on its bottom. “`mstyle1ud`” outputs a gray line on its top and on its bottom. Read section 4.3 for more information.

### Sample title

Lorem ipsum dolor sit amet, elit  
maecenas dui potenti dolor, ligula  
ultricies, volutpat in dui est. Justo  
molestie nulla eget voluptatem  
suscipit, elementum sed a nam  
commodo in imperdiet, amet  
dictum ut, nec laoreet suspendisse,  
ante magna lobortis dolor.

#### **mstyle1**

Adds a left and right padding.

Also supports:

**mstyle1u**

**mstyle1d**

**mstyle1ud**

### Sample title

Lorem ipsum dolor sit amet, elit  
maecenas dui potenti dolor, ligula  
ultricies, volutpat in dui est. Justo  
molestie nulla eget voluptatem  
suscipit, elementum sed a nam  
commodo in imperdiet, amet  
dictum ut, nec laoreet suspendisse,  
ante magna lobortis dolor.

#### **mstyle2**

Also supports:

**mstyle2u**

**mstyle2d**

**mstyle2ud**

### Sample title

Lorem ipsum dolor sit amet, elit  
maecenas dui potenti dolor, ligula  
ultricies, volutpat in dui est. Justo  
molestie nulla eget voluptatem  
suscipit, elementum sed a nam  
commodo in imperdiet, amet  
dictum ut, nec laoreet suspendisse,  
ante magna lobortis dolor.

#### **mstyle3**

Also supports:

**mstyle3u**

**mstyle3d**

**mstyle3ud**







### Sample title

Lorem ipsum dolor sit amet, elit maecenas dui potenti dolor, ligula ultricies, volutpat in dui est. Justo molestie nulla eget voluptatem suscipit, elementum sed a nam commodo in imperdiet, amet dictum ut, nec laoreet suspendisse, ante magna lobortis dolor.

**mstyle4**

Also supports:

**mstyle4u**

**mstyle4d**

**mstyle4ud**

### Sample title

Lorem ipsum dolor sit amet, elit maecenas dui potenti dolor, ligula ultricies, volutpat in dui est. Justo molestie nulla eget voluptatem suscipit, elementum sed a nam commodo in imperdiet, amet dictum ut, nec laoreet suspendisse, ante magna lobortis dolor.

**mstyle5**

### Sample title

Lorem ipsum dolor sit amet, elit maecenas dui potenti dolor, ligula ultricies, volutpat in dui est. Justo molestie nulla eget voluptatem suscipit, elementum sed a nam commodo in imperdiet, amet dictum ut, nec laoreet suspendisse, ante magna lobortis dolor.

**mstyle6**

Also supports:

**mstyle6u**

**mstyle6d**

**mstyle6ud**





Modules in positions “footer1”, “footer2”, “footer3” and “footer4” should be assigned the module suffixes “mstyle7” if they are on the top and “mstyle8” if they are under the top. This is required because the header on the top must have a larger gap to match the graphics in the background.

### Sample title

Lorem ipsum dolor sit amet, elit maecenas dui potenti dolor, ligula ultricies, volutpat in dui est. Justo molestie nulla eget voluptatem suscipit, elementum sed a nam commodo in imperdiet, amet dictum ut, nec laoreet suspendisse, ante magna lobortis dolor.

**mstyle7**

Also supports:  
**mstyle7d**

### Sample title

Lorem ipsum dolor sit amet, elit maecenas dui potenti dolor, ligula ultricies, volutpat in dui est. Justo molestie nulla eget voluptatem suscipit, elementum sed a nam commodo in imperdiet, amet dictum ut, nec laoreet suspendisse, ante magna lobortis dolor.

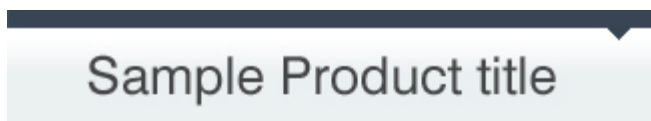
**mstyle8**

Also supports:  
**mstyle8u**  
**mstyle8d**  
**mstyle8ud**

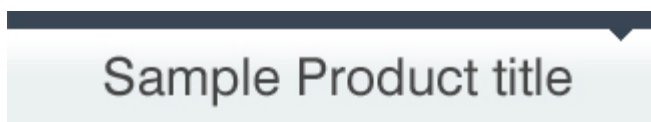




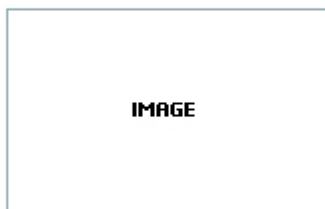
The following module styles work with the mod\_vmrotone\_\* module series.



mstyle\_vm1



mstyle\_vm2



mstyle\_vm3





## 5. Template setup

### 5.1 Logo setup

To setup your logo, publish a “Custom HTML” module with an uploaded image in any template position.

Example:

1. Upload your logo on your website
2. Create a new “Custom HTML” module that contains the URL of the image you just uploaded
3. Publish that module in a suitable position

For additional help with illustrated examples, visit <http://www.bonusthemes.com> and open the tutorial “How to upload your logo” from the tutorials section.

You can publish your logo in any position, but the recommended one for logos is “icon”. If you want to use that position for your logo, the maximum height should be 175 pixels. If you want to use a shorter logo with a vertical middle alignment you can either create an image of 175 pixel height which contains transparent pixels, or alternatively you can define the top margin of the HTML div “pos\_icon” from the CSS file /templates/bt\_shopit/css/template.css.

Example:

```
#pos_icon {  
    margin-top: 10px;  
}
```

### 5.2 Banner setup

To setup a banner, publish a banner module in any template position.

### 5.3 How to show/hide the BonusThemes logo

You can show or hide the BonusThemes logo from  
Extensions > Template Manger

### 5.4 PNG fix

MS Internet Explorer 5 and 6 have trouble rendering the alpha levels (transparencies) of PNG images. The template is equipped with a script that fixes this problem. To enable transparencies in PNG files for MS Internet Explorer 5 and 6, use the CSS class “pngfix”. In some cases images appear distorted. To avoid this distortion provide “width” and “height” attributes in your <img> HTML tags. Alternatively, you can try the CSS class “pngfix\_static”.

PNG fix’s website:

<http://www.twinhelix.com>





## 5.5 How to enable/disable CMenu

CMenu (Classic Menu) is the menu that appears on the top of the page.

If you want to use a module instead of CMenu you can disable it from  
Extensions > Template Manger

locate the option “Header Menu Type” and set it to “Position Header”. You can now publish your module in the position “header”.

## 5.6 How to set the Joomla menu for CMenu

CMenu by default shows the contents of the Joomla menu “topmenu”.

In order to change the source of CMenu, go to  
Extensions > Template Manager

and use the option “Header Menu Name”.

## 5.7 How to enable/disable the SEOCP feature

SEOCP (Search Engine Optimization Content Positioning) is a feature that controls the position of the main content of the pages.

When SEOCP is enabled the content is internally positioned on the top of the HTML code and this helps search engines find and analyze the content easier. When the page loads, a JavaScript script moves the content to the proper position so that the visual structures can display it in the way the human eye can understand better.

SEOCP needs JavaScript to work. This means that users with JavaScript disabled will not be able to read the content of the page.

By default, SEOCP is disabled. To enable SEOCP go to  
Extensions > Template Manager

and use the option “SEOCP”.

## 5.8 Hidden module positions

Shop It features 5 hidden positions for supplementary functionality. The names of these positions are “aux1”, “aux2”, “aux3”, “aux4”, “aux5”.





## 5.9 Custom menu styling

The Shop It template has a default way of laying out menus. It uses a specific set of CSS rules that may not appear nice in exception cases. One such exception is a horizontal menu.

To make the template ignore the default layout for menus you can use a custom “Menu Class Suffix”. This should not be confused with “Module Class Suffix”. From the administrator’s control panel go to Extensions > Module Manager

open the menu module that needs to have a different layout, open the “Advanced Parameters” panel on the right side of the page and set the “Menu Class Suffix” to any value (type for example “mystyle”) and click the “Save” button.

## 5.10 How to set the width of any position

To set the width of a module position in the template go to Extensions > Template Manager

click the bt\_shopit template and use the “Position widths” text box.

You can simply type the name of the template, a semi-colon and a width in pixels. Each line should have one setting.

Example:

```
left: 160  
right: 200
```

To set the width of the main body use the keyword: “mainbody”.

Example:

```
mainbody: 700
```

## 5.11 How to install the VirtueMart 1.1 addons

In this section we assume that you already have installed the Shop It template and VirtueMart 1.1 in your system. Unpack the archive with the VirtueMart 1.1 addons to a temporary directory.

Copy the file “menu\_logo.gif” into the directory:  
/components/com\_virtuemart/shop\_image/ps\_image

Copy the directory “shopit” into the directory:  
/components/com\_virtuemart/themes

Activate the VirtueMart theme:

- Login to the Joomla control panel and go to the menu Components > VirtueMart
- From the left panel click the “Configuration” option.
- Click the tab “Site”.
- On the right column “Layout” locate the first option “Select the theme for you Shop” and choose “shopit” from the drop down menu.
- Click the “Save” button from the top right corner of the page.





## 5.12 Installation notes on accompanied modules

Shop It is accompanied by 10 modules that present products with animations. These modules are:

Rotation of one image:

- mod\_vmrotone\_featureprod
- mod\_vmrotone\_latestprod
- mod\_vmrotone\_randomprod
- mod\_vmrotone\_selected
- mod\_vmrotone\_topten

Rotation of multiple images:

- mod\_vmrotmulti\_featureprod
- mod\_vmrotmulti\_latestprod
- mod\_vmrotmulti\_randomprod
- mod\_vmrotmulti\_selected
- mod\_vmrotmulti\_topten

These modules are evolutions of basic VirtueMart modules, except from mod\_vmrotone\_selected and mod\_vmrotmulti\_selected which are new and built to display selected products.

These modules are free and you can download them from the Joomla Addons section of the Downloads area from <http://www.bonusthemes.com>.

Unfortunately, MS Internet Explorer 6 and 7 are not able to present them in order, unless you specify a fixed width in pixels. In order to have those browsers work properly, do specify a fixed width in the properties of each of these modules.

Shop It also has three special module styles (module suffixes) for the mod\_vmrotone\_\* series. These are "mstyle\_vm1", "mstyle\_vm2" and "mstyle\_vm3". Please read section 4.3 for more information.

Finally, if you want to put modules of the mod\_vmrotone\_\* series in consequent positions (for example in positions "advert1", "advert2", "advert3" and "advert4") you may notice that they won't align to the bottom. To fix that, edit them from the Module Manager and set the same height in all of them. This will force them use the same height in their interior.

## 5.13 How to connect CMenu with VirtueMart 1.1

CMenu is the menu that appears by default as the main template menu. As explained in previous sections its data source is a regular Joomla! menu of your choice.

The connection of CMenu with VirtueMart 1.1 is a very simple task. All you have to do is create an "External Link" menu item and use the "Link" text box to define the type of connection you want. The system will convert your link to VirtueMart data if it starts with "vm:". After that keyword, you should enter a type of connection and optional parameters.





Here is an example of what the Link should look like if you want to show all the VirtueMart categories under a menu item:

```
:vm:category
```

And here is a more complex example that connects a menu item with the sub-categories of the category 5.

```
:vm:category:id=5
```

Depending on the command you use (“category” in this case) you have optional parameters to filter your connection. For example, you may want to show only one level of sub-categories. To do that, you should use the parameter “depth”:

```
:vm:category:id=5:depth=1
```

The colon (:) symbol is a delimiter for your parameters. If you want to use parameters, you should separate them with a colon (:).

Here is a list with all the available commands:

- category : Displays VirtueMart product categories.
- featured : Displays featured products.
- latest : Displays latest products.
- random : Displays random products.
- selected : Displays selected products.
- topten : Displays best selling products.

Read Appendix C for a detailed reference on the commands and their parameters.

Menu Item that links to another page.

Menu Details	
Title:	Products
Alias:	
Link:	:vm:category
Display in:	Top Menu
Parent Item:	Top <ul style="list-style-type: none"><li>About Joomla!</li><li>Features<ul style="list-style-type: none"><li>- test 1</li><li>- test 222 dskfi sdalfi sdlfisd</li></ul></li></ul>







## Appendix A - How to install a template

To install a template in Joomla! 1.5.x follow the next 6 steps:

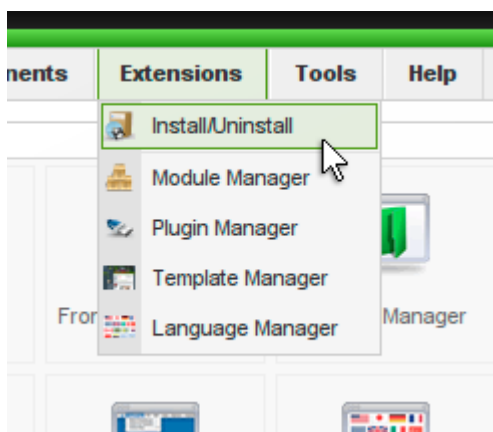
### Step 1

Get into the administrator's control panel with your browser.

The URL usually looks like

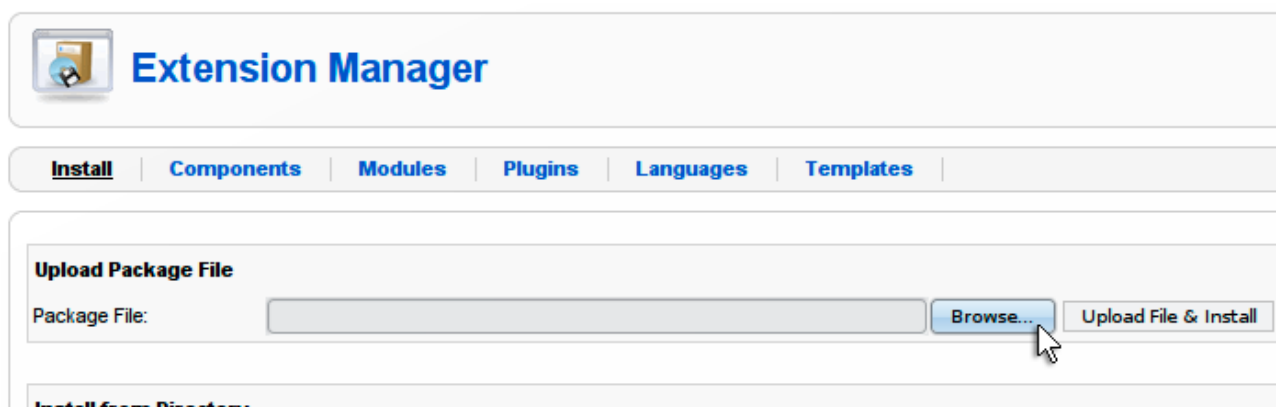
<http://www.example.com/administrator/>

### Step 2



Go to the menu *Extensions > Install/Uninstall*

### Step 3



Click the *Browse* button to find the archive of the template, and then click *Upload File & Install* to perform the installation procedure.





#### Step 4



### Extension Manager

**Install**

Components

Modules

Plugins

Languages

Templates



#### Install Template Success

Easygate is the August 2008 Joomla! template for the registered members of the bonusthemes.com community.  
Visit <http://www.bonusthemes.com> for more information and support.

#### Upload Package File

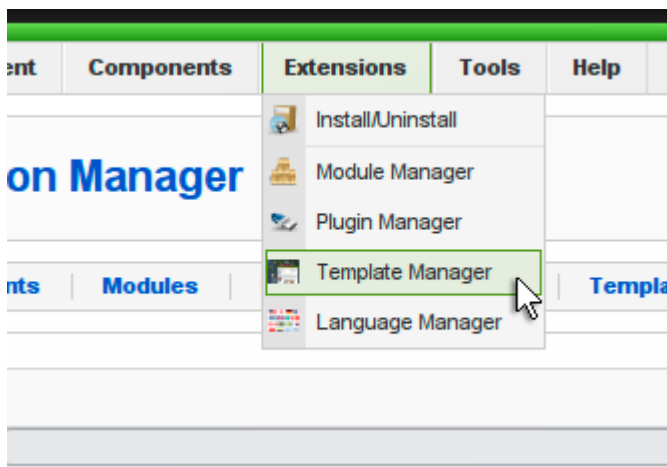
Package File:

Browse...

Upload File & Install

If the installation was successful you will be able to see a success message like the one in the image.

#### Step 5



The next thing to do is to activate the template.

Go to *Extensions > Template Manager*



## Step 6

#	Template Name	Default	Assigned	Version	Date	Author
1	beez			1.0.0	19 February 2007	Angie Radtke/Robert Deutz
2	bt_easygate			1.0	August 2008	BonusThemes.com
3	JA_Purity	★		1.2.0	12/26/07	JoomlaArt.com
4	rhuk_milkyway			1.0.2	11/20/06	Andy Miller

From the *Template Manager* page click on the template name you just installed and then click the *Default* button to make that template the default one.



## Appendix B - How to setup a module

To setup a module in Joomla! 1.5.x follow the next 4 steps:

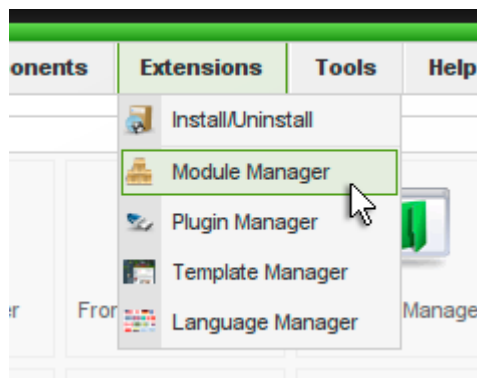
### Step 1

Get into the administrator's control panel with your browser.

The URL usually looks like

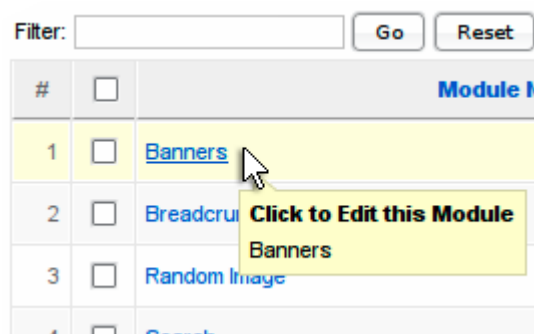
<http://www.example.com/administrator/>

### Step 2



Go to the menu *Extensions > Module Manager*

### Step 3



Find the module you want to edit and click it.

Note: If you cannot find your module perhaps there are too many modules split in pages. Go through the pages to find your module, or use the filters to limit the list of modules on your screen.

### Step 4



te Menus Content Components Extensions Tools Help

Preview 0 1

Save Apply Close

**Module: [Edit]**

**Details**

Module Type: **mod\_banners**

Title: Banners

Show Title: ☐ No ☒ Yes

Enabled: ☐ No ☒ Yes

Position: left

Order: 0::Banners

Access Level: Public

ID: 30

Description: The Banner Module allows to show the active Banners out of the Component within your site.

**Menu Assignment**

Menus: ☒ All ☐ None ☐ Select Menu Item(s) from the List

Menu Selection: ExamplePages

- Section Blog
- Section Table
- Category Blog
- Category Table
- keyconcepts
- Extensions
- Content Layouts

**Parameters**

**Module Parameters**

Target: New Window with Browser Navigation

Count: 1

Banner Client: Open Source Matters

Category: Joomla! Promo

Search By Tags: ☒ No ☐ Yes

Randomise: Sticky, Randomise

Header Text

Footer Text

Module Class Suffix: mstyle1

Advanced Parameters

Now you are in the page that controls the module.

From the Details area you can control many features including:

- Set the title of the module
- Show or hide the title
- Publish or unpublish the module by checking the Enabled attribute
- Set the position of the module

From the Parameters area you can control other features including the ability to

- Set the Module Class Suffix

To save your changes click the Save button ton the top right corner.





## Appendix C - CMenu to VirtueMart 1.1 link reference

To connect CMenu with VirtueMart's data create an "External Link" menu item and use the "Link" text box to enter the connection command.

The following example will display all the product categories:

```
:vm:category
```

Commands can take parameters. Type the colon (:) symbol before each parameter. Here is an example that demonstrates how you can build a link with multiple parameters:

```
:vm:category:id=1:depth=1:published=1:cur_vendor=0
```

Available commands and their parameters:

### *C.1 category*

Displays product categories.

#### **id**

Valid values: Comma separated list of product category IDs.

Description: When used, only the sub-categories of the given IDs will appear.

Default: 0

Example: :vm:category:id=1,2,3

#### **depth**

Valid values: Zero or any positive integer number.

Description: Value 1 or larger sets the maximum level of depth of the categories to appear. Value 0 shows them all.

Default: 0

Example: :vm:category:depth=1

#### **published**

Valid values: 1 or 0 that represent published or all.

Description: Use value 1 if you want to list only the published categories, 0 if you want to list them all.

Default: 1

Example: :vm:category:published=1

#### **cur\_vendor**

Valid values: 1 or 0 that represent current vendor only, or all vendors.

Description: Use value 1 if you want to list the categories of the current vendor only, 0 if you want to list them all.

Default: 1

Example: :vm:category:cur\_vendor=1





## C.2 featured

Displays featured products.

### **max\_items**

Valid values: Any positive integer number.

Description: Maximum number of items to display.

Default: 10

Example: :vm:featured:max\_items=20

### **cat**

Valid values: Comma separated list of category IDs.

Description: When used, only the products under the given categories will appear.

Example: :vm:featured:cat=1,2,3

### **cur\_vendor**

Valid values: 1 or 0 that represent current vendor only, or all vendors.

Description: Use value 1 if you want to list products of the current vendor only, 0 if you want to list them all.

Default: 1

Example: :vm:featured:cur\_vendor=1

## C.3 latest

Displays latest added products.

### **max\_items**

Valid values: Any positive integer number.

Description: Maximum number of items to display.

Default: 10

Example: :vm:latest:max\_items=20

### **cat**

Valid values: Comma separated list of category IDs.

Description: When used, only the products under the given categories will appear.

Example: :vm:latest:cat=1,2,3

### **cur\_vendor**

Valid values: 1 or 0 that represent current vendor only, or all vendors.

Description: Use value 1 if you want to list products of the current vendor only, 0 if you want to list them all.

Default: 1

Example: :vm:latest:cur\_vendor=1





## ***C.4 random***

Displays randomly selected products.

### **max\_items**

Valid values: Any positive integer number.

Description: Maximum number of items to display.

Default: 10

Example: :vm:random:max\_items=20

### **cat**

Valid values: Comma separated list of category IDs.

Description: When used, only the products under the given categories will appear.

Example: :vm:random:cat=1,2,3

### **cur\_vendor**

Valid values: 1 or 0 that represent current vendor only, or all vendors.

Description: Use value 1 if you want to list products of the current vendor only, 0 if you want to list them all.

Default: 1

Example: :vm:random:cur\_vendor=1

## ***C.5 selected***

Displays custom selected products.

### **id**

Valid values: Comma separated list of product IDs.

Description: ID numbers of the products you want to show.

Example: :vm:selected:id=1,2,3

The usage of the parameter id is compulsory.







## C.6 topten

Displays best selling products.

### max\_items

Valid values: Any positive integer number.

Description: Maximum number of items to display.

Default: 10

Example: :vm:topten:max\_items=20

### cat

Valid values: Comma separated list of category IDs.

Description: When used, only the products under the given categories will appear.

Example: :vm:topten:cat=1,2,3

### cur\_vendor

Valid values: 1 or 0 that represent current vendor only, or all vendors.

Description: Use value 1 if you want to list products of the current vendor only, 0 if you want to list them all.

Default: 1

Example: :vm:topten:cur\_vendor=1





**bonus**themes.com

E X T R E M E   J O O M L A   T E M P L A T I N G

- Graphics: Mediagrafix - <http://www.mediagrafix.gr>
- Programming: Creative Pulse - <http://www.creativepulse.eu>

---

Distribution - Support: <http://www.bonusthemes.com>