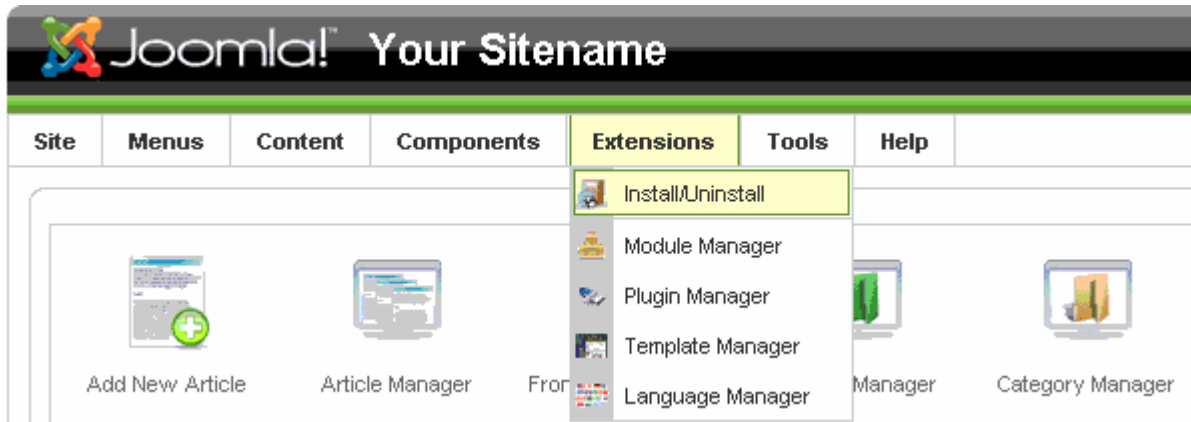


How to install templates

Install via Admin Panel (packed template file)

Log into the back-end of your site (www.your-site.com/administrator/)

Click on: Extensions -> Install/Uninstall




You see the page "Extension Manager"

From here you can install your Templates, Plugins, Modules, Components and Languages. You have three options:

- Upload Package File - (select a package from your PC, upload and install it)
- Install from Directory - (enter the path where the package is located on your server)
- Install from URL - (enter the URL to the package)

Here, we choose the first method: Upload Package File

Select the package from your PC and click the button "Upload File & Install"

 **Extension Manager**

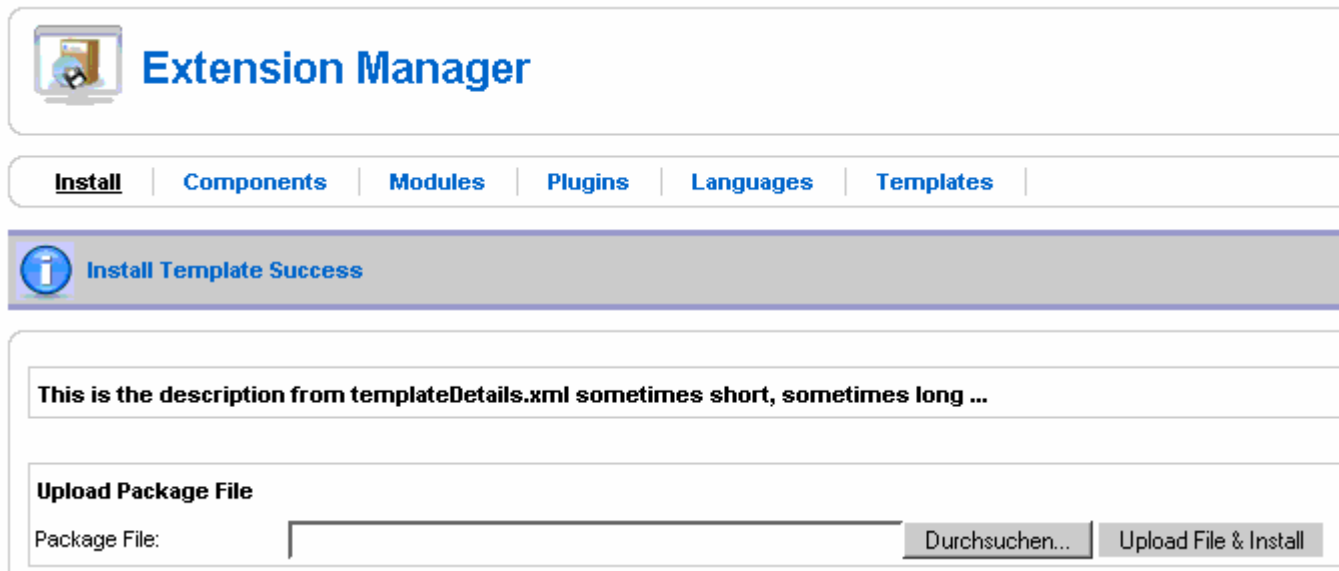
Install | **Components** | **Modules** | **Plugins** | **Languages** | **Templates**

Upload Package File
Package File:

Install from Directory
Install Directory:

Install from URL
Install URL:

If the package contains no errors you are done and get a success message like the one below.



The screenshot shows the Joomla! Extension Manager interface. At the top, there's a header with the Joomla! logo and the title "Extension Manager". Below this is a navigation bar with tabs: "Install", "Components", "Modules", "Plugins", "Languages", and "Templates". The "Install" tab is active. Below the navigation bar, there's a message box with an information icon and the text "Install Template Success". Below this, there's a description area with the text "This is the description from templateDetails.xml sometimes short, sometimes long ...". At the bottom, there's a section titled "Upload Package File" with a text input field labeled "Package File:", a "Durchsuchen..." button, and an "Upload File & Install" button.

Install via FTP (unpacked template file)

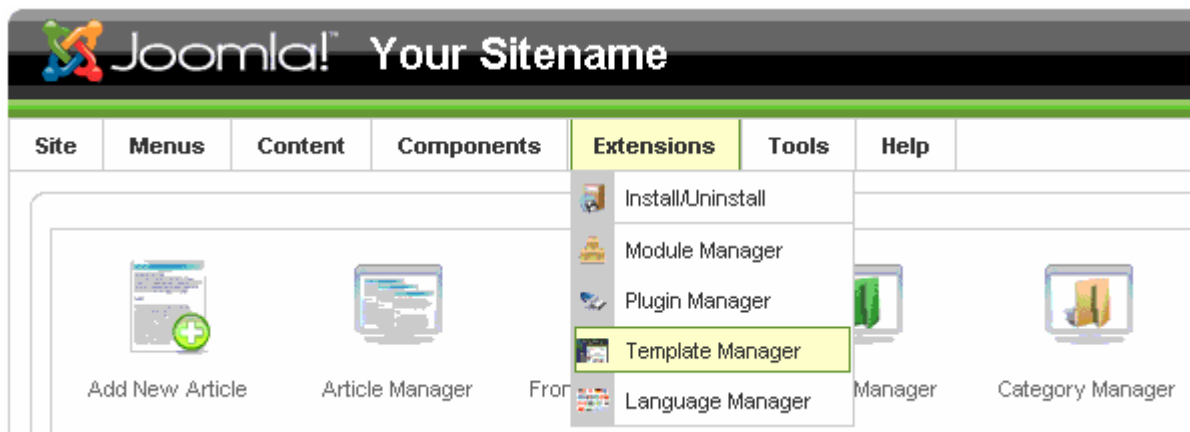
Templates can also be installed via FTP without packaging them. Simply select the template folder on your PC and upload it to your server, using your favorite FTP software. Be sure you upload the template folder to the directory: `/path_to_joomla/templates/` - where `/path_to_joomla/` is the location of your Joomla! installation on the server. This method is mostly used when you have created a template yourself, and do not want to have to package it to install the template, or if you want to upload more than one template at once.

Note: Do not try to use FTP to install Components, Modules and Plugins if you are a beginner/novice. These items need database entries which have to be inserted manually if you bypass the package installer.

How to switch templates

To change the default Template for the Site (Front-end) or Administrator (Back-end), follow these steps:

- Log in to the Administrator (Back-end). If you are not sure how to do this see: [To log in to the Administrator \(Back-end\)](#)
- Click on: Extensions -> Template Manager



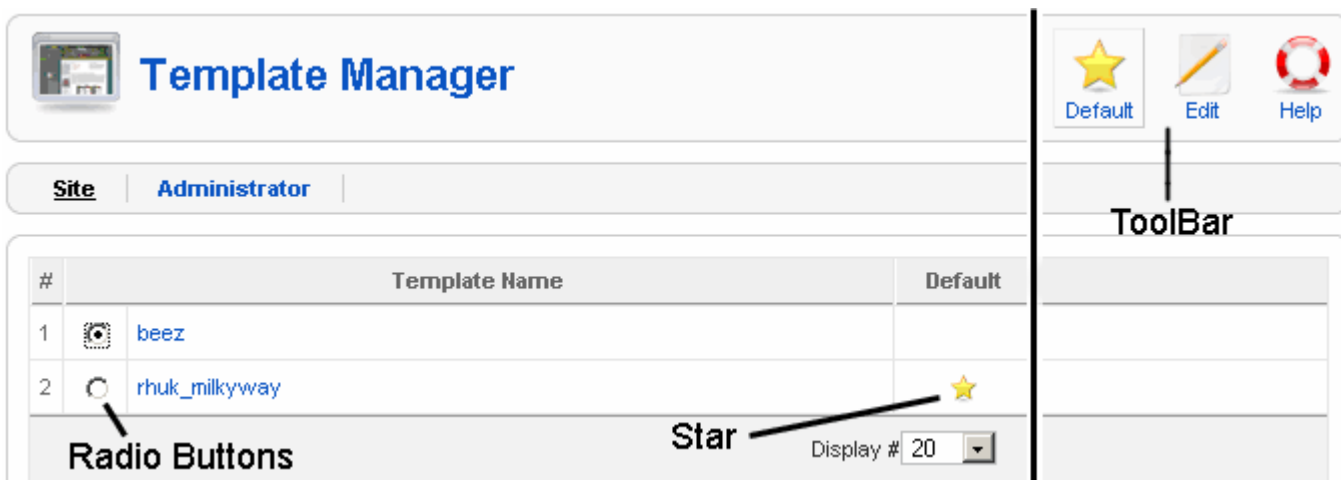
You will now see the Template Manager screen.

From here you manage your templates for Front-end and Back-end. The default view shows your installed Front-end templates. The default template for the Front-end is marked with a star; in the image below it is rhuk_milkyway.

To change the default template to beez:

- click the radio button left from the template name to select it;
- click "Default" on the toolbar;

the star changes from rhuk_milkyway to beez and you are done.



Assign more than one template for the Front-end

Joomla! gives you the option of switching between two or more templates on the Front-end. This is done with "Menu Assignment", so you can set different templates for each menu or only a menu item.

Click on: Extensions -> Template Manager

You see your installed templates, now choose a template which is **not** set as your default one. Click on the template name **or** hit the radio button to the left of the template name, and click "Edit" on the toolbar. You now see the page "Template: [Edit]", click the radio button "Select from List" in the "Menu Assignment" block and choose the menu items on which the template will be shown. Click "Save" on the toolbar and you're done.